

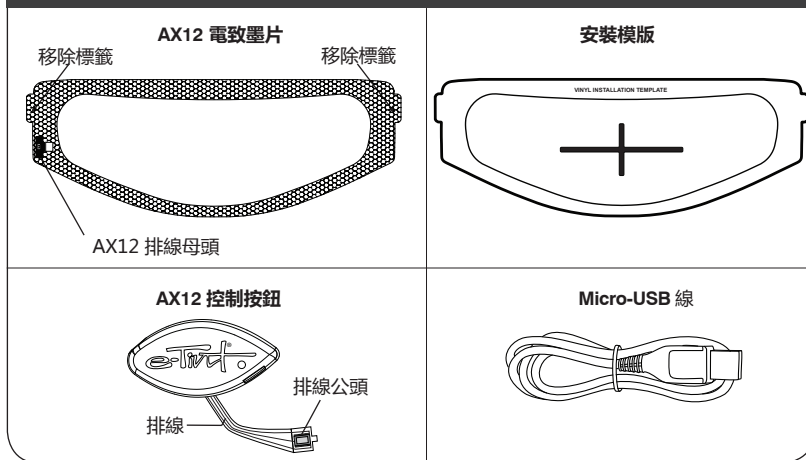
請於安裝前詳細閱讀本說明書。您也可以前往 www.e-tintproducts.com 檢視這些指示的數位版本。

安裝說明

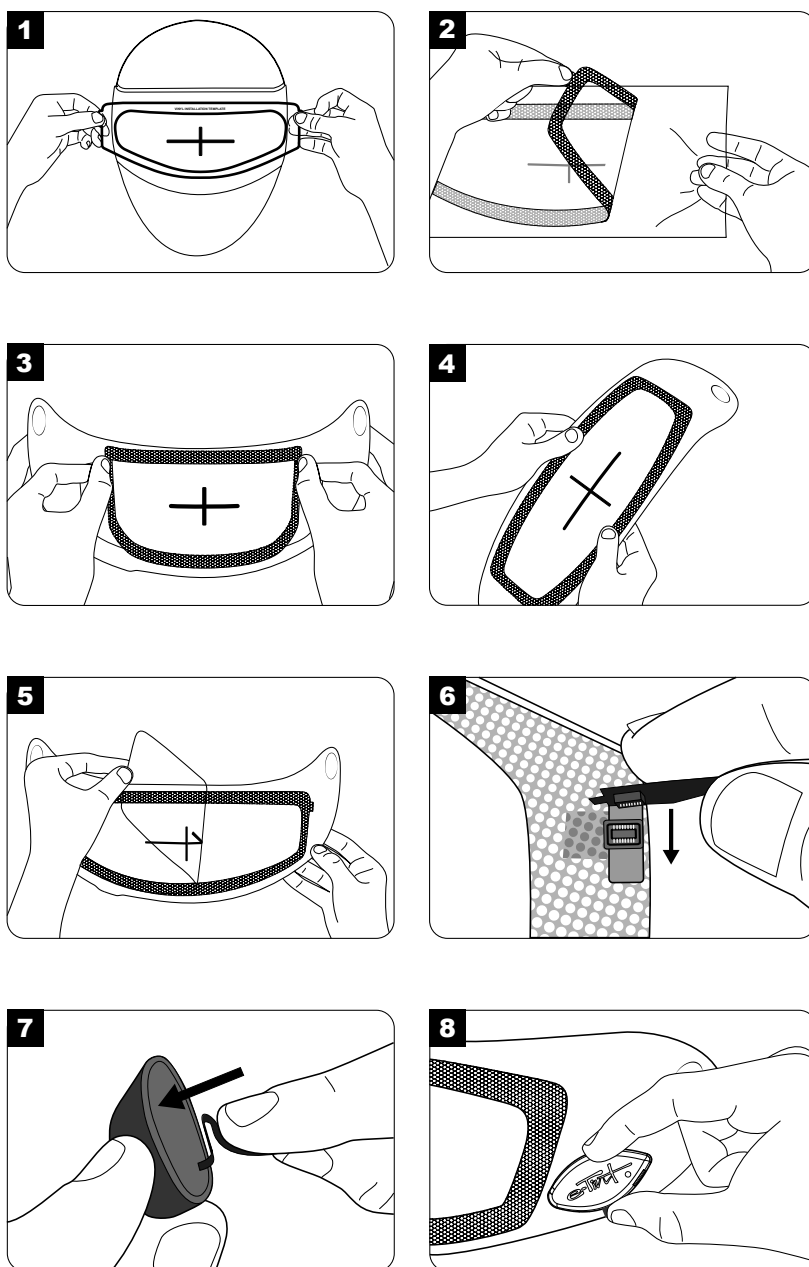
1. 請在乾燥無塵之空間進行安裝。請先將風鏡從安全帽上移除。依照安全帽原廠指示確實清潔風鏡 (內部與外部)，或是使用水與中性清潔劑。去除所有的指紋、油漬、砂石、與水分。
2. 將風鏡裝回安全帽，裝回時請注意避免碰觸風鏡內側，以確保沒有留下指痕。
3. 輕輕地將安裝用模板背紙移除。安全帽風鏡應處於閉合狀態，將模板中心記號對準風鏡中心位置，以確保安裝於風鏡目視區域 (圖1)。
4. 將安裝模板停留於風鏡上，將風鏡從安全帽上移除。朝下置放於毛巾或乾淨的表面上。避免觸碰風鏡內部表面以確保黏貼面無髒汙與指紋。
5. 小心地將 Akari® AX12 機車用內墨片背紙移除 (圖2)。
6. 抓住 AX12 內墨片邊緣將黏貼網與內墨片輕輕地彎成 "U" 型，將內墨片之中心十字標對準安裝模板中心十字標 (圖3)。
7. 由黏貼網中間向左右按壓，請注意避免按壓內墨片液晶表面 (圖4)。風鏡與內墨片之間無法完全服貼為正常現象。
8. 小心地將墨片上之安裝模板於 AX12 上移除 (圖5)。並將風鏡外側之安裝模板移除。注意：如果您有可能會將內墨片移至其它安全帽上建議您保留此安裝模板，當您需要將 Akari® AX12 安裝於另一頂安全帽時，將需要再次用到此模板。
9. 安裝 AX12 控制開關。先將連接線之襯墊移除，將公母接頭連接 (圖6)。將連接線由風鏡下緣繞出，將 AX12 開關上之襯墊移除，如連接線過長可稍微摺疊黏貼於開關之背膠上 (圖7)。
10. 注意！一旦將開關安裝，AX12 之安裝位置是設計即為永固狀態。一旦安裝於風鏡上後，您可能無法重新定位或轉移控制開關。一旦嘗試上述之定位或轉移控制開關之動作，將會造成控制開關毀損而需要進行替換。安裝時，請注意勿將控制鈕黏貼超出風鏡邊緣 (圖8)。
11. 將風鏡裝回安全帽上。在騎乘前，請先測試自動模式之感光設定於您所需要的舒適狀態。請參照「使用說明」以設定感光模式。
12. 請使用產品包裝內附之 Micro-USB 線進行充電。請參閱以下充電說明。

移轉內墨片：將開關之插頭於 AX12 內墨片上拔除。於內墨片之移除標籤輕輕的將內墨片與風鏡分離。遵照 (1-8) 之說明重新安裝於新的風鏡上。注意：AX12 內墨片可移除或移轉至另一片風鏡，但控制開關則設計為無法移轉。您可以單獨購買 AX12 開關以供替換之用。

零件表



安裝示意圖



使用說明

詞彙表： 啟動：開；遮光 | 待機：關；透明

Akari® AX12電子墨片可使用開關按壓控制或內建感光元件控制自動模式於遮光或透明之間變化。墨片顏色之深淺無法由使用者來做調整。自動模式於出廠時光閘預設為原廠預設模式。您可以依照您喜愛的感光度來調整設定啟動與待機的光閘感應。

將裝置設定於手動模式：輕輕的按壓開關於啟動與待機間變化。

將裝置設定於自動模式：按住開關約 3 秒。電子墨片將會閃爍 3 次以表示進入自動模式。放開開關，您已經進入自動模式。

離開自動模式(進入手動模式)：按壓開關將會回到手動模式。注意：回到手動模式墨片將自動進入待機狀態。

調整感光閘門：先將裝置設定於自動模式。將裝置放置於您需要裝置啟動的相近光源環境下，持續按壓開關約 6 秒。6 秒後裝置將會連續閃爍 3 次以表示已完成光閘設定。現在光源只要高於所設定之預設亮度將會自動啟動裝置。除非回復原廠或調整設定，否則裝置會記錄此設定不會更動，且會一直處於此設定。注意：調整時請勿遮擋到光閘 (位於按鈕上方) 按壓按鈕時。請注意，手指不要遮擋到光閘，這將會造成裝置一直處於啟動狀態，並只會於非常暗的環境下切換回待機狀態。請勿於移動中設定光閘。

回復原廠設定：持續按壓按鈕約 12 秒，裝置會閃爍 3 次，連續兩次 (共計閃爍 6 次)已表示回復原廠設定。

充電：使用包裝內附之 AX12 線連接 AX12 並插入電腦 USB 或 USB 變電器，充電時裝置會處於啟動狀態，開關將會無反應，當完全充電裝置將會進入待機模式。完全放電狀態下，將需充電約 2 小時，才能將裝置完全充電，完全充電後之裝置，於啟動狀態下將約可使用 40 個小時。當完全充電或待機時電量可保持約 3 週。注意：收藏時請勿將 AX12 持續連接於充電器上，當電池長期處於低電量狀態並未充電將會造成電池故障。AMI 建議如須放置超過一個月以上，請每隔兩個月將裝置完全充電一次。放置環境將會影響放電情況，低溫環境是最適合的置放區域。

注意！您有責任選擇如何使用此產品，且所有使用責任將由您自行承擔。如您認為Akari® 裝置作動不正常，請移除並停止使用，E-TINT LLC. 提供購買後一年內內墨片故障換新保固。E-TINT 不接受與提供任何除此之外之保固，AKARI 裝置不建議使用於複合曲度之風鏡上，本產品不建議於夜晚或低於 -10C (14°F) 或高於 45°C(113°F) 之環境下使用。請您自行斟酌使用。

清潔與保養

使用溫水，中性清潔劑與軟毛巾清潔，如有難以清除之污垢，請用家用玻璃清洗劑清潔。請勿使用含有保潔劑、研磨、強酸或具腐蝕性之清潔劑進行清潔。請勿浸泡或於潮濕中啟動裝置。未使用時請勿將裝置放置於太陽下曝曬，這將會造成裝置故障。

棄置與回收

請依照當地相關法令對 AX12 內墨片作棄置與回收。因裝置內含有電池與液晶，請依照廢棄物管理法與家用廢棄物分開分類丟棄。當您的 Akari® AX12 已達使用壽命期限，請聯繫所在地授權經銷商以詢問回收選項。

RETURN POLICY

If you need warranty/repair service, first you should contact the retailer who sold you the product and verify the services he/she can provide. If this is not possible, we will be happy to assist you!

You may return any new, unopened product for a full refund or exchange within (30) days of purchase. Special order returns are at our discretion. The total refund amount is for the cost of

your product, excluding shipping. Please contact Customer Support at support@e-tint-products.com or by visiting www.e-tintproducts.com/customersupport for a Return Merchandise Authorization (RMA) number and specific shipping instructions. Products returned for full refund must be in new condition and in original packaging (including all accessories that were included with the product), and returned to us within 30 calendar days of the issuance of the RMA. A 15% restocking fee may be charged for any accessories or components missing from the returned product. A purchase receipt MUST be provided with the return of any product. Products returned without an RMA will not be eligible for a refund or exchange. The shipping and duty charges for returning a product are the customer's responsibility.

Although we do not require you to register your new product, it is important to keep the following information to obtain warranty service. In the event that you would like to file a claim, e-Tint Customer Service *will require*:

- **LOT NO.** Next to the UPC code
- **SKU NO.** Next to the UPC code
- **ORIGINAL PURCHASE RECEIPT**
- **FIRST & LAST NAME**
- **TELEPHONE NUMBER**
- **EMAIL & SHIPPING ADDRESS**

LIMITED WARRANTY

E-Tint is 100% committed to creating the best performance products in the industry and we are always interested in receiving input from our valued customers. If you experience a problem with one of our products we want to know about it.

All Akari® products are warranted for a period of ONE year from date of purchase against any defects in materials and workmanship. If you find a defect within one (1) year after purchase, we kindly request you return your product to E-Tint. We will then evaluate your claim and, based on our findings and at our option, repair or replace any Akari® product that does not conform to the Limited Warranty.

In order to obtain limited warranty service, the following procedures must be followed: Contact E-Tint Customer Support for an RMA (Return Merchandise Authorization) number, and specific return and shipping instructions. The Akari® product must be returned with a purchase receipt for warranty service. Products returned to E-Tint without notification will not be eligible for limited warranty service. If the product does not conform to the Limited Warranty, the shipping and duty charges for returning the product are the responsibility of E-Tint.

Online Auction Purchases: Products purchased through online auctions (this does not apply to purchases made on www.e-tintproducts.com) are not eligible for warranty coverage. Online auction confirmations are not accepted for warranty verification. To obtain warranty service, an original or copy of the sales receipt from the original retailer is required. E-Tint will not replace missing components from any package purchased through an online auction.

EXCLUSIONS

The Limited Warranty set forth above applies only to Akari® products manufactured by or for E-Tint, LLC, and that bear the "Akari" trademark, trade name, or logo. The Limited Warranty does not apply to any non-Akari® products or any helmet visor or face shield, even if packaged or sold with an Akari® product. Manufacturers or suppliers, other than E-Tint, may provide their own warranties to the end user purchaser. Please check the relevant packaging for any relevant third party warranty information.

The Return Policy and Limited Warranty does not apply: (a) to consumable parts, such as batteries, unless damage has occurred due to a defect in materials or workmanship; (b) to damage caused by accident, abuse, misuse, flood, fire, earthquake or other external causes; (c) to damage caused by operating the product outside the permitted or intended uses described by E-Tint; (d) to damage caused by ordinary wear and tear; (e) to damage caused by service or repair performed by anyone who is not a representative of E-Tint; or (e) to damage arising from failure to follow instructions relating to the product's use or installation.

EXCEPT AS SET FORTH IN THE LIMITED WARRANTY, ALL PRODUCTS AND SERVICES MADE AVAILABLE TO YOU BY E-TINT ARE PROVIDED ON AN "AS IS" AND "AS AVAILABLE" BASIS. TO THE FULLEST EXTENT PERMITTED BY APPLICABLE LAW, E-TINT EXPRESSLY DISCLAIMS ALL OTHER WARRANTIES OF ANY KIND, WHETHER EXPRESS OR IMPLIED, INCLUDING BUT NOT LIMITED TO THE IMPLIED WARRANTIES OF MERCHANTABILITY, FITNESS FOR PARTICULAR PURPOSE, TITLE AND NON-INFRINGEMENT, WITH RESPECT TO ALL PRODUCTS AND SERVICES MADE AVAILABLE TO YOU BY E-TINT. NO INFORMATION OR ADVICE OBTAINED THROUGH THE E-TINT WEBSITE, OR ANY OTHER AFFIRMATION OF E-TINT, BY WORDS OR ACTIONS, SHALL CONSTITUTE A WARRANTY. IN NO EVENT SHALL E-TINT LIABILITY IN CONNECTION WITH ANY PRODUCT OR SERVICE MADE AVAILABLE TO YOU BY E-TINT EXCEED THE AMOUNT ACTUALLY PAID BY YOU TO E-TINT FOR ANY SUCH PRODUCT OR SERVICE. IN NO EVENT SHALL E-TINT BE LIABLE FOR ANY INDIRECT, INCIDENTAL, CONSEQUENTIAL, OR SPECIAL DAMAGES ARISING OUT OF OR IN CONNECTION WITH ANY PRODUCT OR SERVICE MADE AVAILABLE BY E-TINT. SOME JURISDICTIONS DO NOT ALLOW THE EXCLUSION OF CERTAIN WARRANTIES OR THE LIMITATION OR EXCLUSION OF LIABILITY FOR INCIDENTAL OR CONSEQUENTIAL DAMAGES. ACCORDINGLY, THOSE PROVISIONS SET FORTH ABOVE MAY NOT APPLY TO YOU.

E-TINT, LLC (USA) | 1950 RTE 59, STE 100 Kent, OH 44240
T (877) 451-5937 | F (330) 676-0649 | www.e-tintproducts.com

AMI POWERSPORTS EUROPE | Via Parsubio, 76/2 40133 | Bologna, Italia
www.amipowersports.eu

